



MTRs

Maintain complete material traceability

Use a dedicated wizard to automatically attach test certification documents to associated items in stock.

Associate the same test certifications with multiple stock items.

Associate other files to stock items like CVN tests, other test documents, photos, sketches or NC data for plate rems.

Open attachments from the stock system for review at any time.

Visual cues in the stock system identify stock items that have associated attachments.

Integration between the stock management and nesting systems ensures that every part is associated with a stock item and MTR, and that remnants automatically inherit the correct MTR.

Package MTRs for one, many or all shipping loads

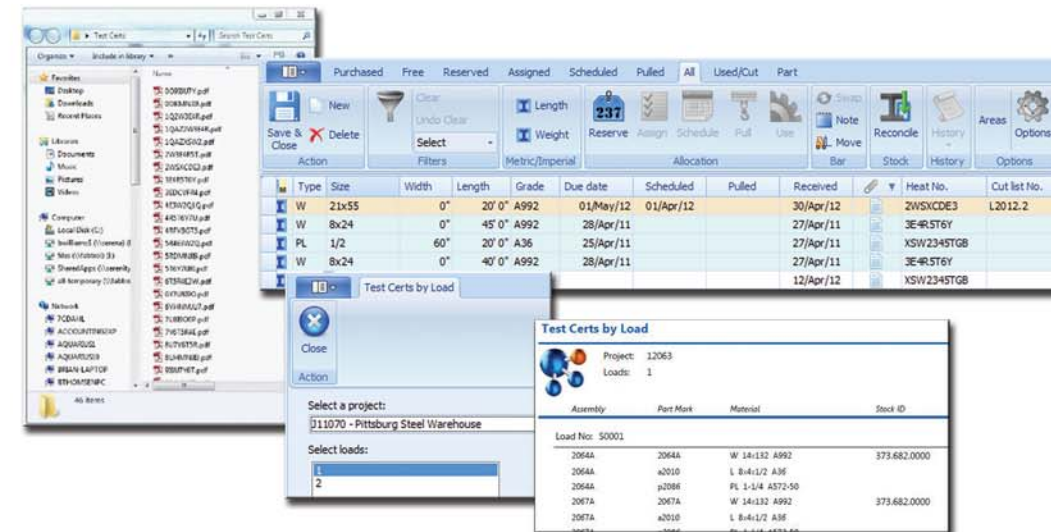
Use a dedicated wizard to package up all test certifications attached to stock items associated with a shipping load.

Package test certifications attached to stock items for one, many or all shipping loads.

Automatically generate an associated shipping report.

Easily make the report and attached test certification available to customers via an FTP site or by attaching them to an email.

Consolidate test cert documents in a folder whether or not the loads are scheduled for delivery. This allows you to easily collect test cert documents when, for example, a job is complete but delivery has been postponed and you want to invoice the customer while you store the job.



AVEVA Group plc

High Cross
Maddingley Road
Cambridge
CB3 0HB
UK

Tel +44 (0) 1223 556655

Fax +44 (0) 1223 556666

www.aveva.com

Headquartered in Cambridge, England, AVEVA Group plc and its operating subsidiaries currently employ staff worldwide in Australia, Austria, Belgium, Brazil, Canada, Chile, China, Columbia, Denmark, France, Germany, Hong Kong, Hungary, India, Italy, Japan, Malaysia, Mexico, Norway, Poland, Russia, Saudi Arabia, Singapore, Spain, Sweden, South Korea, the United Arab Emirates, the United Kingdom and the United States of America. AVEVA also has representatives in additional countries around the world.

For more details on AVEVA Worldwide Offices, visit **www.aveva.com/offices**

www.aveva/futureofsteelfabrication

AVEVA believes the information in this publication is correct as of its publication date. As part of continued product development, such information is subject to change without prior notice and is related to the current software release. AVEVA is not responsible for any inadvertent errors. All product names mentioned are the trademarks of their respective holders. Copyright © 2016 AVEVA