



Basic Barcoding Included with ADC module

Expedite data entry with tethered scanners using barcode reports

Use material due-in reports with barcodes to receive incoming material by PO line item and automatically update inventory to reflect the new items in stock.

Scan barcodes on production traveler reports to track production progress as assemblies are completed through waypoint work areas and optionally record labor hours for the completed tasks.

Create bill of lading reports with barcodes to scan as assemblies are loaded for shipping and automatically update the load status of the assemblies.

Advanced Barcoding Third-party integration via ADC module

Receive material as it is unloaded in real-time

Scan any line on a purchase order to receive all or a partial quantity and automatically relieve PO items in real-time as scanned.

Capture the heat number on incoming material by scanning the barcode from the mill.

Receive items from the same PO line separately when items have different storage areas or heat cert numbers.

Reflect the availability of newly received material immediately in plate and linear cut lists and generate pull lists and cut lists for the shop floor that indicate the status and location of the material.

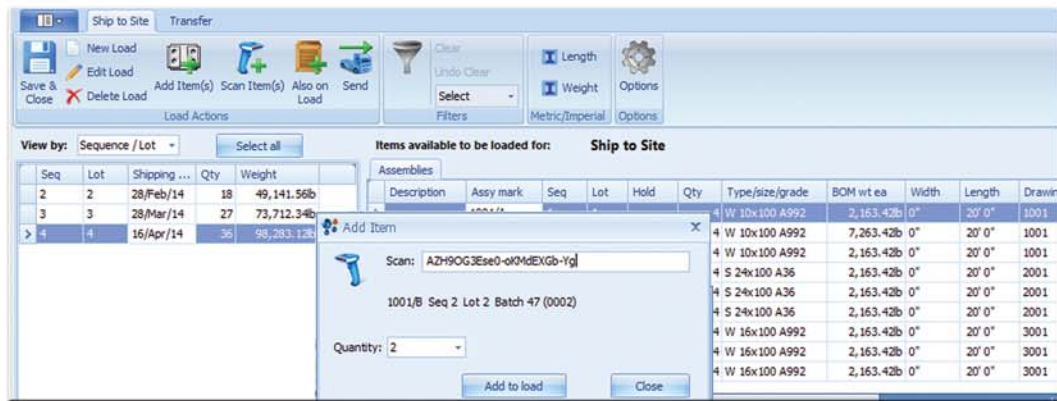
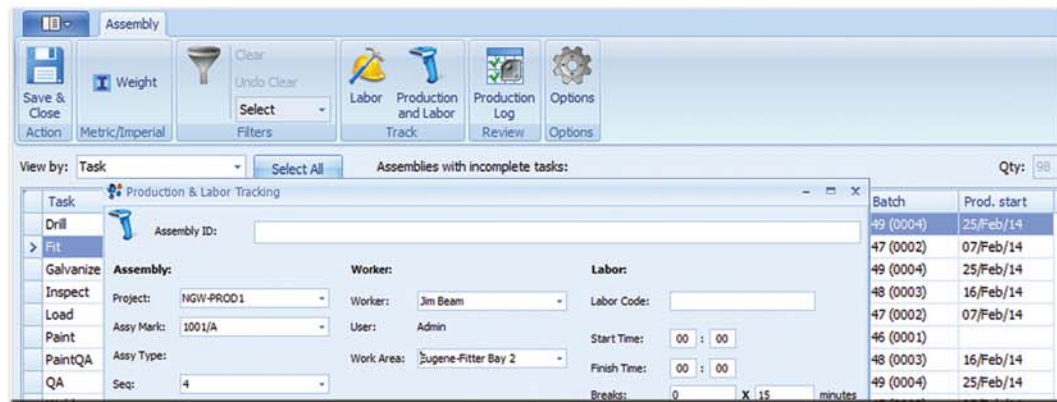
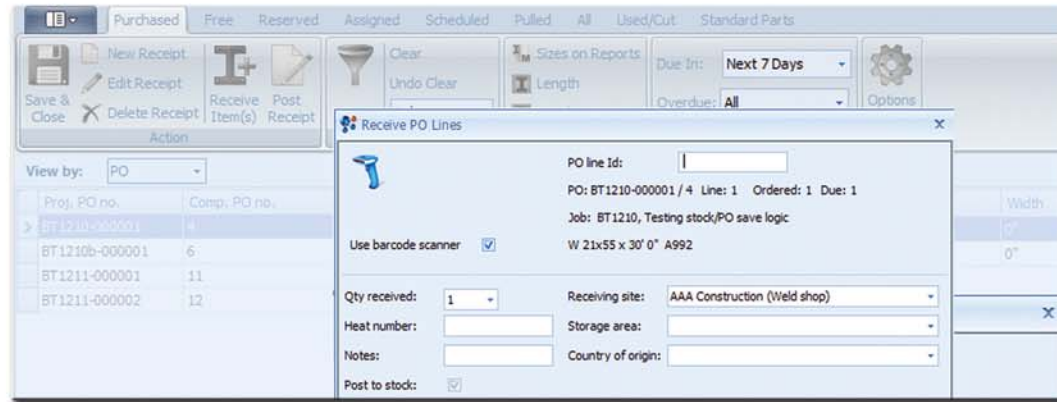
Record production progress in real-time

Record production progress of assemblies in real-time as they are completed and scanned at each waypoint work area through the shop.

Capture additional data in real-time as tasks are completed in each work area including the date and time, the employee and the shift.

Load assemblies for shipping in real-time

Scan assemblies as they are being loaded for shipping and automatically update the load status of the assemblies, the employee loading the assemblies, and the date and time they were loaded.



Real-Time

Automated Data Capture (ADC) module



Remote Access

Real-time remote access to AVEVA FabTrol™ on the go

The latest release provides the ability to retrieve drawings and track production progress on any tablet (iPad, Android, Windows) with a convenient and easy to navigate user interface.

Document Retrieval

Retrieve documents from any tablet

Show current revision and, optionally by permission, show revision history.

Retrieve any drawing type (contract, part, assembly).

Retrieve any file type viewable on a tablet (JPG, PDF, TIF, DWG, DXF).

Eliminates the need to manage files in folders on a network as drawings are automatically organized for retrieval during import.

Production Progress Tracking

Track and record production progress from any tablet

Set the shop, task, work area and worker for the work to be recorded.

Search for an assemblies that match a partial entry.

Mark an assembly task complete, including recording hours to complete the task.

Select a batch of assemblies to complete, or select the batch and then specific assemblies within the batch to complete.

Complete work against assemblies from one job, many jobs or all jobs.



AVEVA Group plc

High Cross
Maddingley Road
Cambridge
CB3 0HB
UK

Tel +44 (0) 1223 556655

Fax +44 (0) 1223 556666

www.aveva.com

Headquartered in Cambridge, England, AVEVA Group plc and its operating subsidiaries currently employ staff worldwide in Australia, Austria, Belgium, Brazil, Canada, Chile, China, Columbia, Denmark, France, Germany, Hong Kong, Hungary, India, Italy, Japan, Malaysia, Mexico, Norway, Poland, Russia, Saudi Arabia, Singapore, Spain, Sweden, South Korea, the United Arab Emirates, the United Kingdom and the United States of America. AVEVA also has representatives in additional countries around the world.

For more details on AVEVA Worldwide Offices, visit **www.aveva.com/offices**

www.aveva/futureofsteelfabrication

AVEVA believes the information in this publication is correct as of its publication date. As part of continued product development, such information is subject to change without prior notice and is related to the current software release. AVEVA is not responsible for any inadvertent errors. All product names mentioned are the trademarks of their respective holders. Copyright © 2016 AVEVA